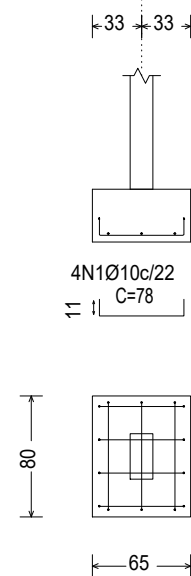
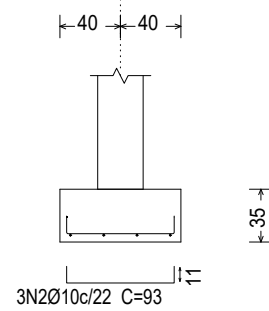


P01, P02, P03, P04, P05, P06, P07, P08, P10, P19, P25, P26, P27, P28, P32, P33 e P34

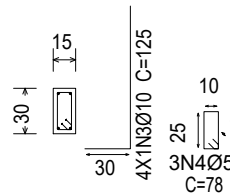
P01, P02, P03, P04, P05, P06, P07, P08, P10, P19, P25, P26, P27, P28, P32, P33 e P34



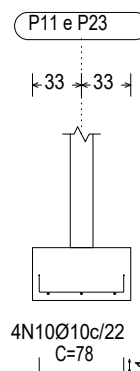
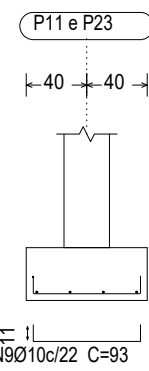
P01, P02, P03, P04, P05, P06, P07, P08, P10, P19, P25, P26, P27, P28, P32, P33 e P34



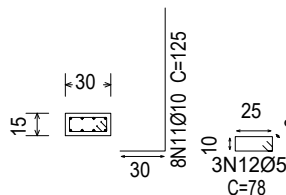
P01, P02, P03, P04, P05, P06, P07, P08, P10, P19, P25, P26, P27, P28, P32, P33 e P34



P11 e P23

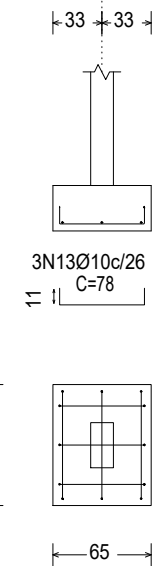


P11 e P23

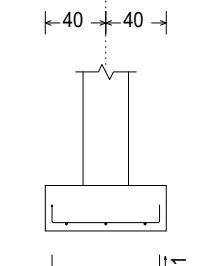


P13, P14, P15, P16, P17, P18 e P21

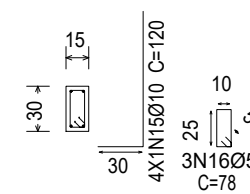
P13, P14, P15, P16, P17, P18 e P21



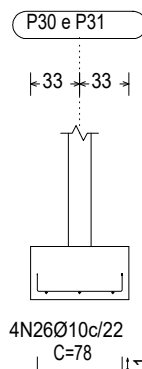
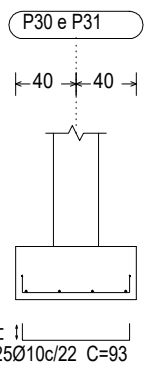
P13, P14, P15, P16, P17, P18 e P21



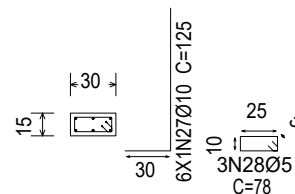
P13, P14, P15, P16, P17, P18 e P21



P30 e P31



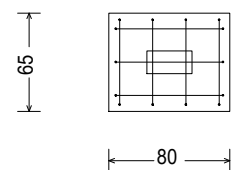
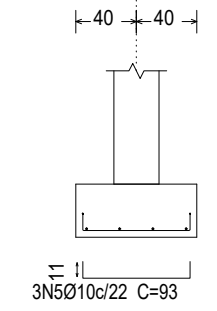
P30 e P31



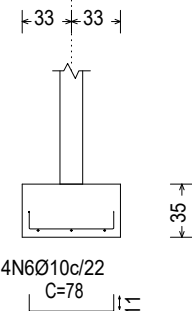
Resumo Aço FUNDAÇÃO	Comp. total (m)	Peso+10% (kg)	Total
CA-50 Ø10	375.8	255	255
CA-60 Ø5	79.6	14	14
Total			269

P09, P12, P24 e P29

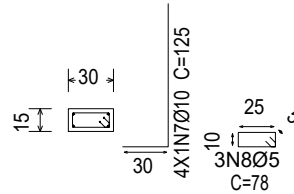
P09, P12, P24 e P29



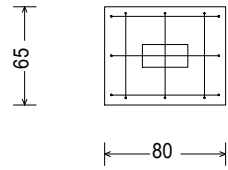
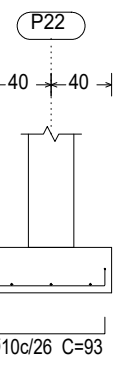
P09, P12, P24 e P29



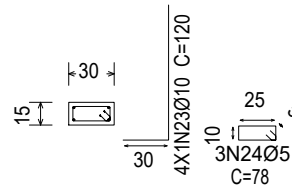
P09, P12, P24 e P29



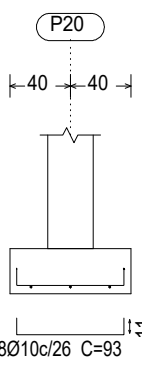
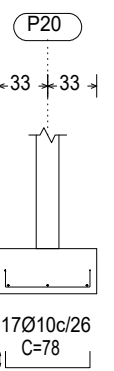
P22



P22



P20



P20



 SEGIPE GOVERNO DO ESTADO		DIRETORIA DE ARQUITETURA E EDIFICAÇÕES PRAÇA TOBIAS BARRETO, Nº 26, BARRIO SÃO JOSÉ CEP: 45050-220 ARACAJU/SE TEL: (79) 3216-5454 / (79) 98851-8337	
TIPO: PROJETO DE ESTRUTURA EM CONCRETO ARMADO		Nº DA PRANCHA	
ASSUNTO: DETALHAMENTO DE FUNDAÇÃO		02/16	
END: Centro Administrativo Governador Augusto Franco - Capucho BLOCO 02			
AUTOR DO PROJETO: JOSÉ VITOR DE JESUS COSTA			
RESPONSÁVEL TÉCNICO: JOSÉ VITOR DE JESUS COSTA CREA: 2719438219SE			
ESCALA: 1/50	DATA: 07/2025	DESENHISTA: JOSÉ VITOR DE JESUS COSTA	